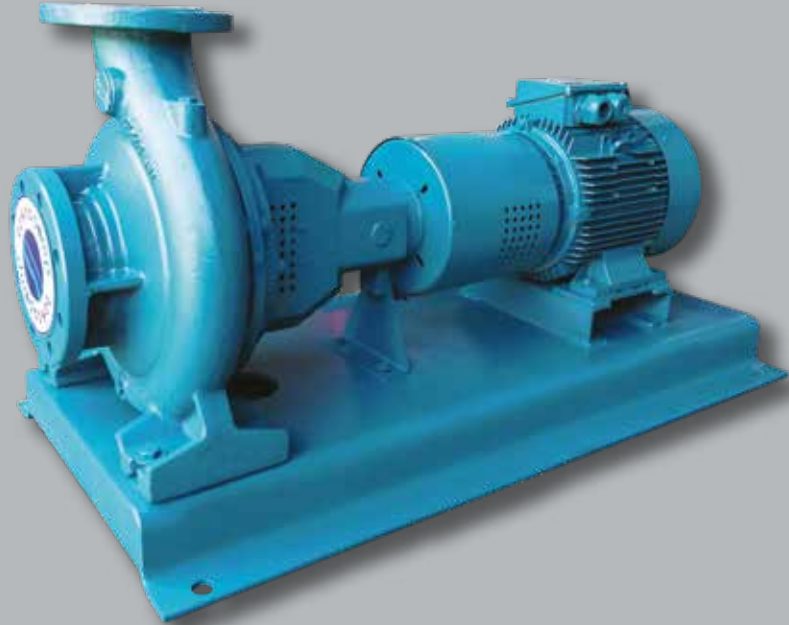


teknopomp

Teknolojik Pompa ve Hidrofor Sistemleri

CENTRIFUGAL PUMPS

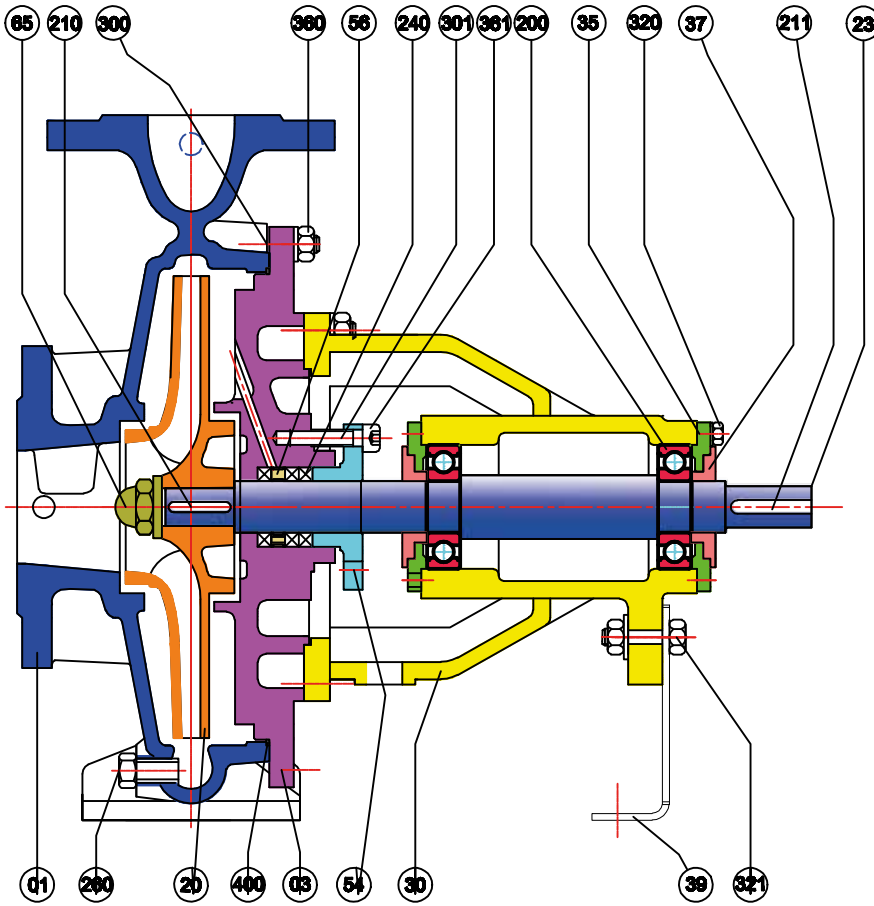
TNP



Teknopomp Teknolojik Pompa ve Hidrofor Sistemleri

TNP - SINGLE STAGE CENTRIFUGAL PUMPS

Sectional Drawing and Part List



| |
|--------------------------|
| 1- Volute Casing |
| 2- Stuffing Box |
| 3- Impeller |
| 4- Bearing Bracket |
| 5- Bearing Cover |
| 6- Water Thrower |
| 7- Pump Support Foot |
| 8- Gland |
| 9- Lantern Ring |
| 10- Impeller Nut |
| 11- Bearing |
| 12- Impeller Key |
| 13- Coupling Key |
| 14- Stuffing Box Packing |
| 15- Plug |
| 16- Imbus Bolt |
| 17- Gland Stud |
| 18- Stuffing Box Bolt |
| 19- Support Foot Bolt |
| 20- Gland Nut |
| 21- O Ring |
| 22- Shaft |

Common Part List

This list includes common parts in accordance with DIN 24 255

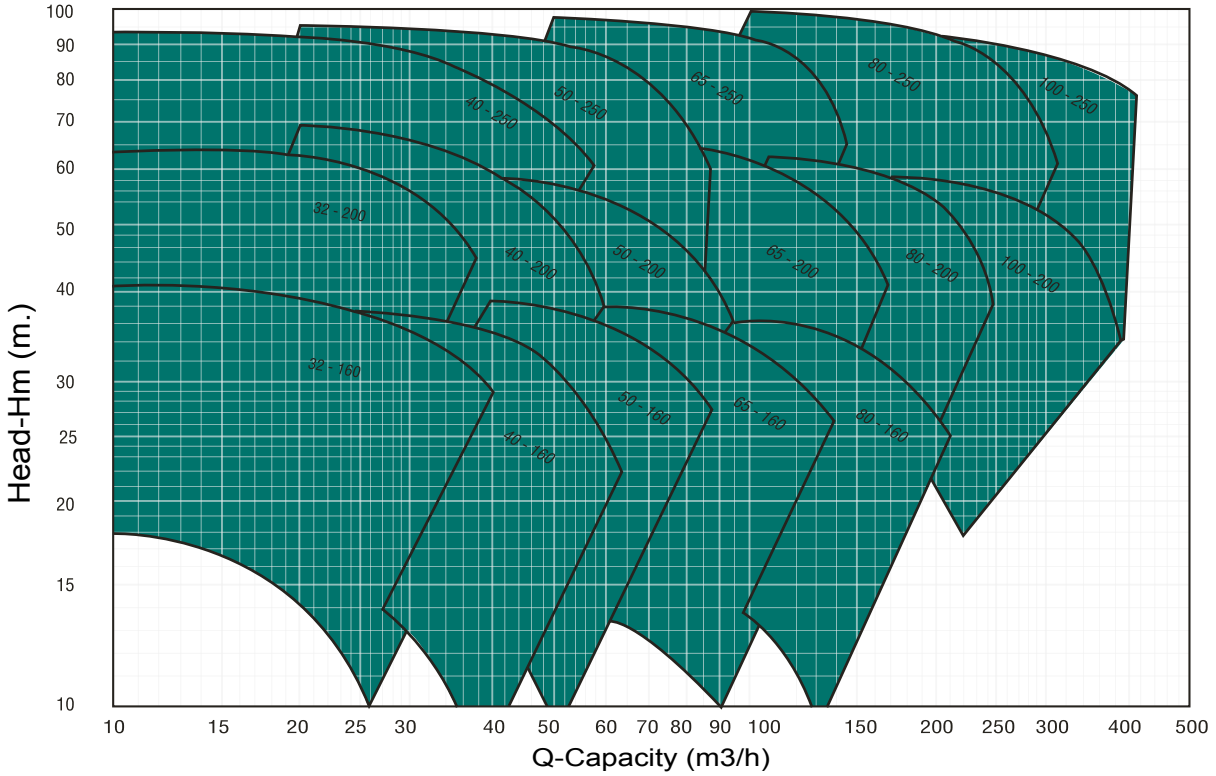
| Part No | Part Name | Pump Size | | | | | | | | | | | | | | | | | | | | | | | | |
|--------------|-----------------|--------------|--------------|--------------|--------------|--------------|--------------|--------------|--------------|--------------|--------------|--------------|--------------|---------------|--------------|--------------|---------------|---------------|--------------|--------------|---------------|---------------|---------------|---------------|---------------|---------------|
| | | TNP 32 - 160 | TNP 40 - 160 | TNP 50 - 160 | TNP 65 - 160 | TNP 80 - 160 | TNP 32 - 200 | TNP 40 - 200 | TNP 50 - 200 | TNP 65 - 200 | TNP 40 - 250 | TNP 50 - 250 | TNP 80 - 200 | TNP 100 - 200 | TNP 65 - 250 | TNP 80 - 250 | TNP 100 - 250 | TNP 125 - 250 | TNP 65 - 315 | TNP 80 - 315 | TNP 100 - 315 | TNP 125 - 315 | TNP 150 - 315 | TNP 100 - 400 | TNP 125 - 400 | TNP 150 - 400 |
| DESIGN GROUP | | A1 | | | | | A2 | | | | | A3 | | B1 | B2 | | | B3 | C1 | | C2 | | | | | |
| 01 | Volute Casing | a | b | c | d | e | f | g | H | i | j | k | l | m | n | o | p | q | r | s | t | u | v | w | x | y |
| 20 | Impeller | a | b | c | d | e | f | g | h | i | j | k | l | m | n | o | p | q | r | s | t | u | v | w | x | y |
| 03 | Stuffing Box | A11 | | | A12 | | A21 | | | | | A31 | | B11 | B21 | | | B | B31 | C11 | C21 | | | | | |
| 30 | Bearing Bracket | A | | | | | | | | | | | | | | | B | | | C | | | | | | |
| 60 | Shaft | A | | | | | | | | | | | | | | | B | | | C | | | | | | |
| 65 | Shaft Nut | A | | | | | | | | | | | | | | | B | | | C | | | | | | |
| 54 | Gland | A | | | | | | | | | | | | | | | B | | | C | | | | | | |
| 37 | Bearing Cover | A | | | | | | | | | | | | | | | B | | | C | | | | | | |
| 56 | Lantern Ring | A | | | | | | | | | | | | | | | B | | | C | | | | | | |



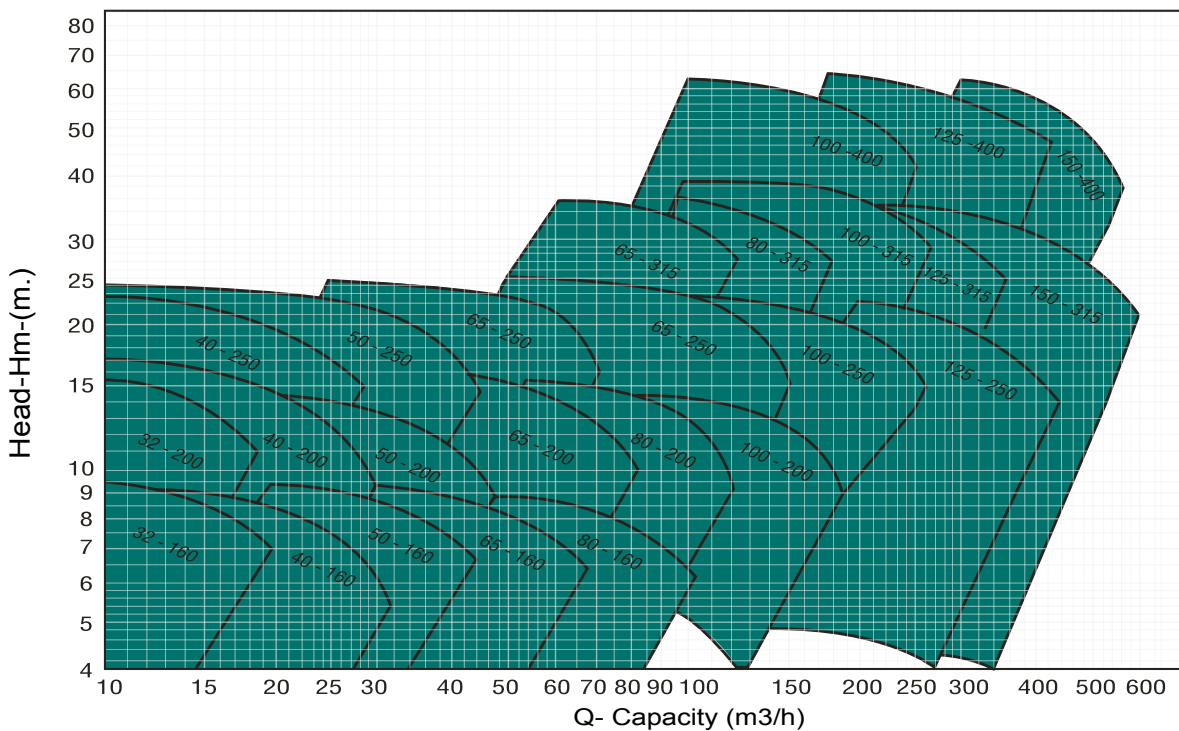
TNP - SINGLE STAGE CENTRIFUGAL PUMPS

Technical Data

Pump Performance Field (2900RPM)



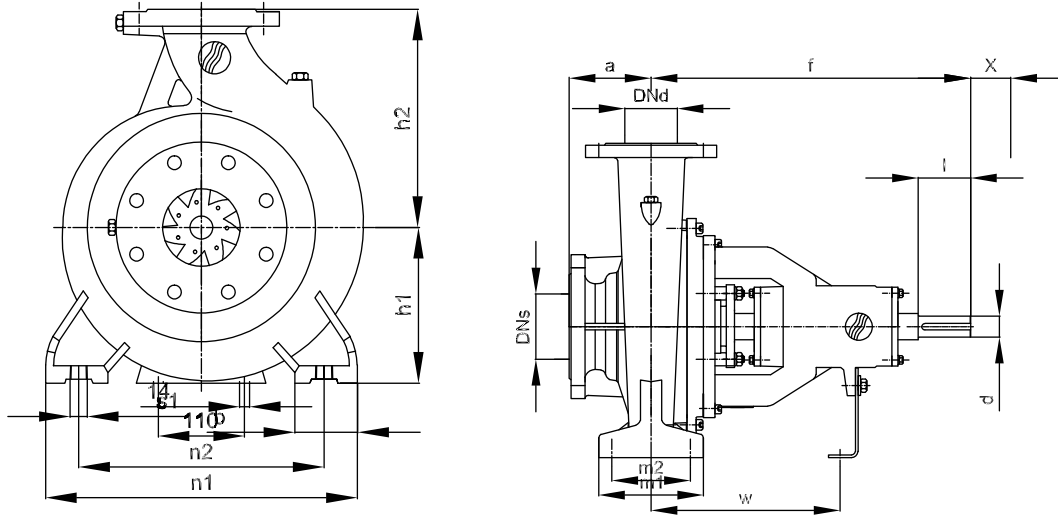
Pump Performance Field (1450RPM)





TNP - SINGLE STAGE CENTRIFUGAL PUMPS

General Dimension Table



| No | Pump Model | | Inlet-Outlet(PN16) | | Length | | | | Connection Dimensions | | | | | | Shaft End (*) | | | |
|----|------------|---------|--------------------|---------|--------|-----|-----|-----|-----------------------|-----|-----|-----|-----|-----|---------------|----|-----|-----|
| | DIN 24255 | EK | DN _s | DN Del. | a | f | h1 | h2 | b | m1 | m2 | n1 | n2 | s1 | W | d | l | X |
| 1 | 32-160 | | 50 | 32 | 80 | 360 | 132 | 160 | 50 | 100 | 70 | 240 | 190 | M12 | 260 | 24 | 50 | 65 |
| 2 | 32-200 | | 50 | 32 | 80 | 360 | 160 | 180 | 50 | 100 | 70 | 240 | 190 | M12 | 260 | 24 | 50 | 65 |
| 3 | | 32-250 | 50 | 32 | 100 | 360 | 180 | 225 | 65 | 125 | 95 | 320 | 250 | M12 | 260 | 24 | 50 | 80 |
| 4 | 40-160 | | 65 | 40 | 80 | 360 | 132 | 160 | 50 | 100 | 70 | 240 | 190 | M12 | 260 | 24 | 50 | 75 |
| 5 | 40-200 | | 65 | 40 | 100 | 360 | 160 | 180 | 50 | 100 | 70 | 265 | 212 | M12 | 260 | 24 | 50 | 75 |
| 6 | 40-250 | | 65 | 40 | 100 | 360 | 180 | 225 | 65 | 125 | 95 | 320 | 250 | M12 | 260 | 24 | 50 | 75 |
| 7 | 50-160 | | 65 | 50 | 100 | 360 | 160 | 180 | 50 | 100 | 70 | 265 | 212 | M12 | 260 | 24 | 50 | 80 |
| 8 | 50-200 | | 65 | 50 | 100 | 360 | 160 | 200 | 50 | 100 | 70 | 265 | 212 | M12 | 260 | 24 | 50 | 85 |
| 9 | 50-250 | | 65 | 50 | 100 | 360 | 180 | 225 | 65 | 125 | 95 | 320 | 250 | M12 | 260 | 24 | 50 | 85 |
| 10 | | 50-315 | 80 | 50 | 125 | 470 | 225 | 280 | 65 | 125 | 95 | 345 | 280 | M12 | 330 | 32 | 80 | 100 |
| 11 | 65-160 | | 80 | 65 | 100 | 360 | 160 | 200 | 65 | 125 | 95 | 280 | 212 | M12 | 260 | 24 | 50 | 100 |
| 12 | 65-200 | | 80 | 65 | 100 | 360 | 180 | 225 | 65 | 125 | 95 | 320 | 250 | M12 | 260 | 24 | 50 | 100 |
| 13 | 65-250 | | 80 | 65 | 100 | 470 | 200 | 250 | 80 | 160 | 120 | 360 | 280 | M16 | 340 | 32 | 80 | 100 |
| 14 | 65-315 | | 80 | 65 | 125 | 470 | 225 | 280 | 80 | 160 | 120 | 400 | 315 | M16 | 340 | 32 | 80 | 110 |
| 15 | | 65-400 | 100 | 65 | 125 | 470 | 250 | 355 | 80 | 160 | 120 | 400 | 315 | M16 | 340 | 32 | 80 | 110 |
| 16 | 80-160 | | 100 | 80 | 125 | 360 | 180 | 225 | 65 | 125 | 95 | 320 | 250 | M12 | 260 | 24 | 50 | 110 |
| 17 | 80-200 | | 100 | 80 | 125 | 470 | 180 | 250 | 65 | 125 | 95 | 345 | 280 | M12 | 340 | 32 | 80 | 110 |
| 18 | 80-250 | | 100 | 80 | 125 | 470 | 200 | 280 | 80 | 160 | 120 | 400 | 315 | M16 | 340 | 32 | 80 | 115 |
| 19 | 80-315 | | 100 | 80 | 125 | 470 | 250 | 315 | 80 | 160 | 120 | 400 | 315 | M16 | 340 | 32 | 80 | 120 |
| 20 | | 80-400 | 100 | 80 | 125 | 530 | 280 | 355 | 100 | 200 | 150 | 500 | 400 | M20 | 370 | 42 | 110 | 120 |
| 21 | 100-200 | | 125 | 100 | 125 | 470 | 200 | 280 | 80 | 160 | 120 | 360 | 280 | M16 | 340 | 32 | 80 | 120 |
| 22 | 100-250 | | 125 | 100 | 140 | 470 | 225 | 280 | 80 | 160 | 120 | 400 | 315 | M16 | 340 | 32 | 80 | 130 |
| 23 | 100-315 | | 125 | 100 | 140 | 470 | 250 | 315 | 80 | 160 | 120 | 400 | 315 | M16 | 340 | 32 | 80 | 130 |
| 24 | 100-400 | | 125 | 100 | 140 | 530 | 280 | 355 | 100 | 200 | 150 | 500 | 400 | M20 | 370 | 42 | 110 | 130 |
| 25 | | 125-200 | 150 | 125 | 140 | 470 | 250 | 315 | 80 | 160 | 120 | 400 | 315 | M16 | 340 | 32 | 80 | 130 |
| 26 | 125-250 | | 150 | 125 | 140 | 470 | 250 | 355 | 80 | 160 | 120 | 400 | 315 | M16 | 340 | 32 | 80 | 140 |
| 27 | 125-315 | | 150 | 125 | 140 | 530 | 280 | 355 | 100 | 200 | 150 | 500 | 400 | M20 | 370 | 42 | 110 | 140 |
| 28 | 125-400 | | 125 | 150 | 140 | 530 | 315 | 400 | 100 | 200 | 150 | 500 | 400 | M20 | 370 | 42 | 110 | 140 |
| 29 | | 150-200 | 200 | 150 | 160 | 470 | 280 | 355 | 100 | 200 | 150 | 500 | 400 | M16 | 340 | 32 | 80 | 170 |
| 30 | | 150-250 | 200 | 150 | 160 | 470 | 280 | 375 | 100 | 200 | 150 | 500 | 400 | M16 | 340 | 32 | 80 | 140 |
| 32 | 150-315 | | 200 | 150 | 160 | 530 | 280 | 400 | 100 | 200 | 150 | 550 | 450 | M20 | 370 | 42 | 110 | 140 |
| 32 | 150-400 | | 200 | 150 | 160 | 530 | 315 | 450 | 100 | 200 | 150 | 550 | 450 | M20 | 370 | 42 | 110 | 140 |

*Back Pull Out Distance required between motor shaft end and pump shaft end.
 TNP pumps are conforming with DN 25 255 and EN 733
 Operation pressure is 10 Bar and test pressure is 13 Bar